

NUANCE

ROMAN BLIND

BLIND MAKING

Version 1.0

EVANS
TEXTILES



Here to help

At Evans, we understand the importance of getting things right for you and your clients. That's why we've put together this easy to follow step-by-step guide to help make things easier for you.

In this guide we'll cover product types, assembly information and chronologically set out the instructions on how to put the product together. The guide is part of the 'Evans Difference' giving our customers expert support which is designed to be easy to follow and hassle free.

**“THE EVANS
DIFFERENCE”**

STEP 1, TRACK, BOTTOM BAR, AND ROD SIZE: -

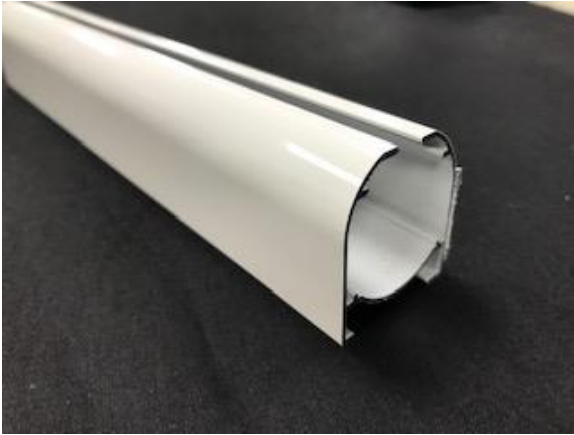


IMAGE 1 (910019)

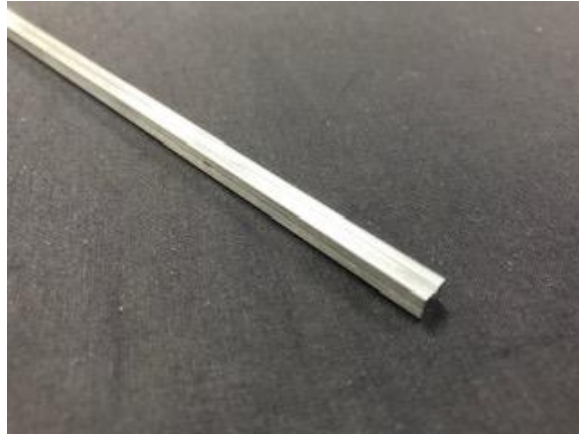


IMAGE 2 (910003)

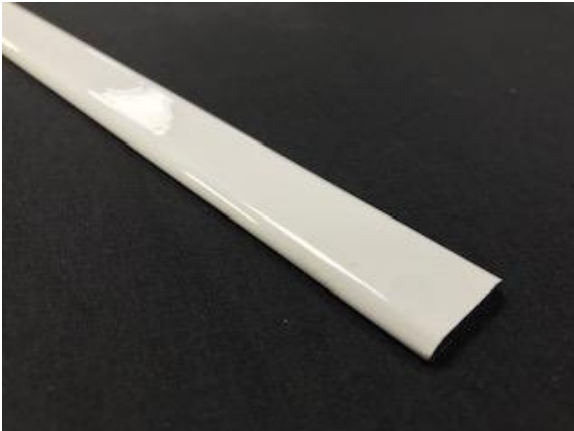


IMAGE 3 (910021)



IMAGE 3 (76336BA)

STEP 2, RIGHT OR LEFT HAND CONTROL: - Right hand (smooth side forward) Left hand (Velcro side forward) please see image below.



IMAGE 4 (RIGHT HAND)



IMAGE 5 (LEFT HAND)

STEP 3, BRACKET TYPE: - Swivel arm or spring bracket, see image below.



IMAGE 6 (910002 SWIVEL BRACKET)

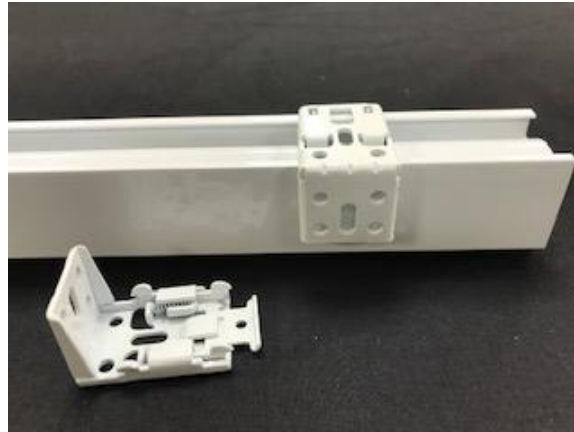


IMAGE 7 (910026 SPRING BRACKET)

STEP 4, BRACKET: - Check total amount of brackets, **Swivel Bracket** apply bracket on to the track and push swivel towards track see below. **Spring Bracket** apply bracket on to the track and push the bracket towards track see below



IMAGE 8 (910002 SWIVEL BRACKET)



IMAGE 9 (910026 SPRING BRACKET)

STEP 5, CORD ROLLS: -

Check total amount of Cord rolls, feed the cord rolls in to the track on the centre drive rod as below. The first cord roll and last cord roll should be facing away from each other see below.

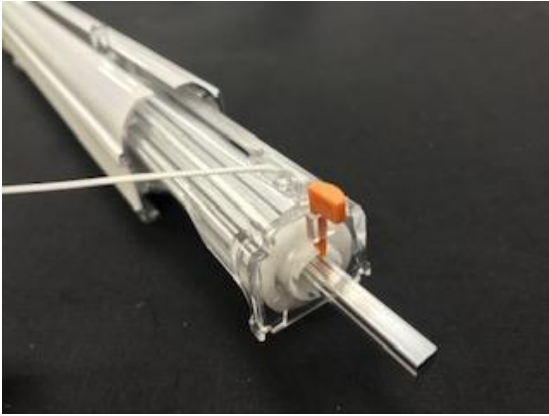


IMAGE 10 (910001 CORD ROLL SUPPORT)



IMAGE 11

STEP 6, CONTROL UNIT TYPE 1:4 OR 1:1 BREAKAWAY - :

Level off screw on the control unit and feed the rod in to the control unit and screw down. Then feed the control unit in to the track and screw in to place, please see below.

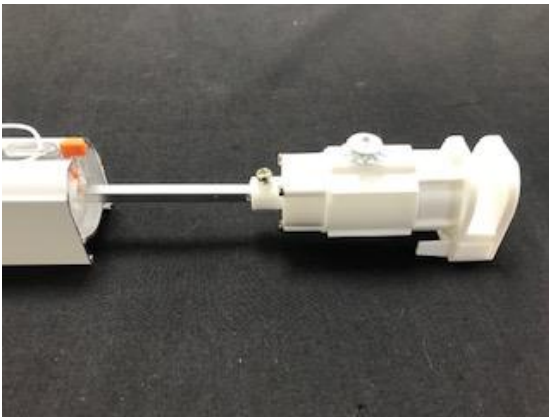


IMAGE 12

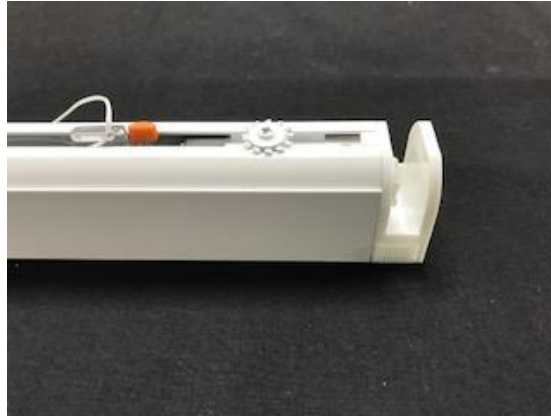


IMAGE 13

STEP 7, CHAIN COLOUR & LENGTH: - Check chain colour and size, cut chain to the size specified with the pliers, then place the end of the chain in the pliers and pop one ball off, then place the other end of the chain in the pliers and prize a small opening in the ball, then attach both ends and push pliers to connect the chain. Then add the chain to the circular cog and push in to the control unit, please see images below.



IMAGE 14



IMAGE 15

STEP 8, SAFETY DEVICES (76666, 76444, TOGGLE ONLY AND LABELS): -

Check safety devices selected and total amount, apply them in a bag place the chain in the bag and secure with an elastic band (1 toggle and 1 cable tie per cord spool and 2 breakaway devices and 2 cable tie per cord spool (except 76666. See below



IMAGE 16

76666 breakaway and toggle (no tie)

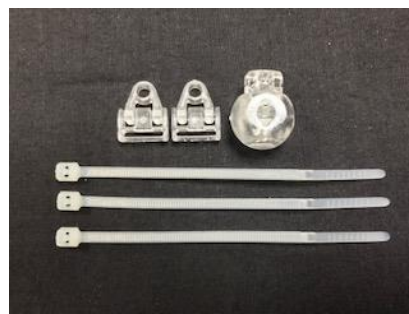


IMAGE 17

76444 breakaway, toggle and tie

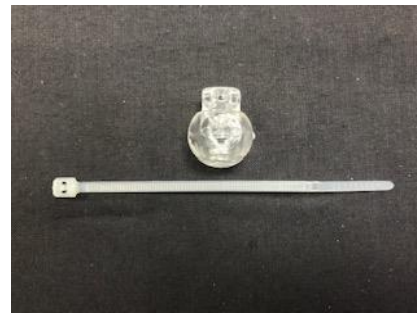


IMAGE 18

toggle only



IMAGE 19

910010 SAFETY LABEL

*****BEFORE PACKAGING TICK OFF EACH ITEM TO MAKE SURE NO STEPS HAVE BEEN MISSED AND NO ITEMS ARE MISSING*****

STEPS	COMPLETE? <i>Please tick</i>
STEP 1	
STEP 2	
STEP 3	
STEP 4	
STEP 5	
STEP 6	
STEP 7	
STEP 8	

...and that's it! You're finished!

WEBTEX ONLINE ORDERING

We understand life gets busy, often the working hours slip away and picking up the phone or emailing during office hours can be a hassle. That's why at Evans we try to make things easier, you can place your order online using our Webtex system whenever works for you and you'll enjoy lots of benefits...

FAST

It only takes 5 minutes to put through an order online and if it's before 4pm on a weekday, we'll prioritise your order for a speedy delivery (excludes M2M items)

EXCLUSIVITY

As a privilege to our customers, some of our products are available with a lovely little discount on our website. All M2M tracks and blinds on webtex receive an automatic 10% discount plus if you order 3 more, carriage is completely free of charge!

SHOP 24/7

There is nothing easier or more comfortable than ordering your products with Evans Textiles from your own workplace, on the go or in the comfort of your own home 24 hours a day, seven days a week!

DELIVERY THE VERY NEXT DAY

Evans Textiles delivers to the whole of the UK mainland and if you order by 4pm via Webtex we'll ensure your consignment gets to you the following day as standard (excludes M2M)

