

**NUANCE**

**BSHD HEAVY DUTY  
ROMAN BLIND**

---

**BLIND MAKING**

Version 1.0

**EVANS  
TEXTILES**



## Here to help

At Evans, we understand the importance of getting things right for you and your clients. That's why we've put together this easy to follow step-by-step guide to help make things easier for you.

In this guide we'll cover product types, assembly information and chronologically set out the instructions on how to put the product together. The guide is part of the 'Evans Difference' giving our customers expert support which is designed to be easy to follow and hassle free.

**“THE EVANS  
DIFFERENCE”**

**STEP 1**, TRACK, BOTTOM BAR, AND ROD SIZE: -

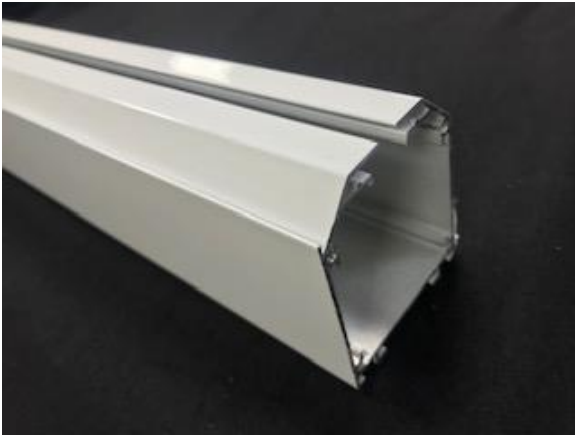


IMAGE 1 (910011 BSHD TRACK)

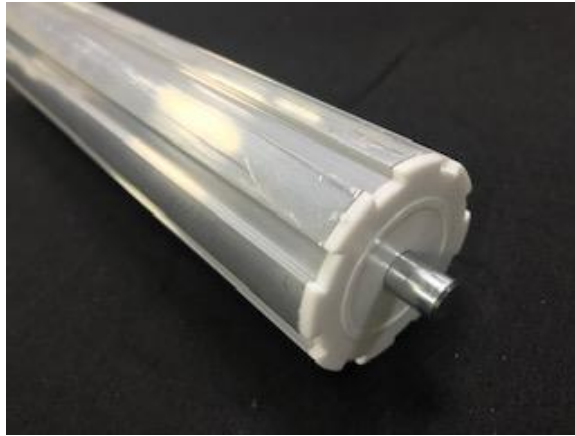


IMAGE 2 (910012 BSHD TUBE)



IMAGE 3 (910021 BOTTOM BAR)



IMAGE 4 (76336BA FIBREGLASS RODS)

**PART 2**, RIGHT OR LEFT HAND CONTROL: -

Right hand (smooth side forward) Left hand (Velcro side forward) please see image below.



IMAGE 5 (RIGHT HAND)



IMAGE 6 (LEFT HAND)

**STEP 3, BRACKET: -**

IMAGE 7 (910018)

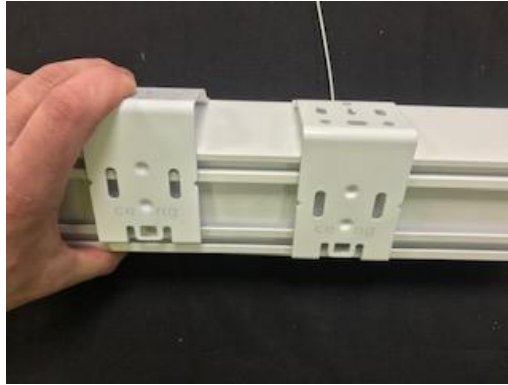


IMAGE 8

**STEP 4, ROD:-**

Add white tube guides to the centre tube (see image 9, 10 and 11)

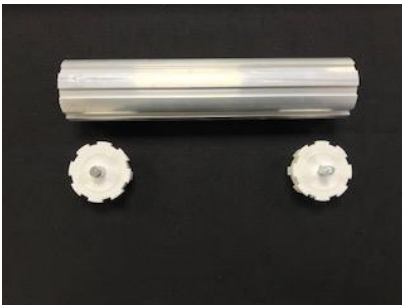


IMAGE 9 (910012 TUBE)



IMAGE 10

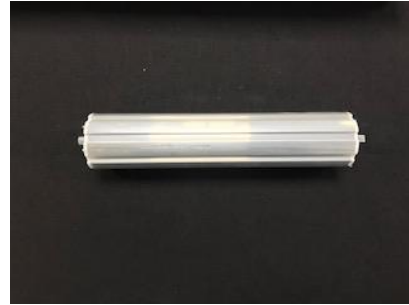


IMAGE 11

**STEP 6, CORD ROLLS: -**

Check total amount of Cord rolls, feed cord through the cord guide and tie a Knot (see image 12, 13 and 14), then add the cord in to the cord spool and feed across then fix it in to the opposite side (see image 15 and 16). Then feed the cord rolls on to the centre rod (see image 18, 19). The first cord roll and last cord roll should be facing away from each other (see image 19), then feed the centre rod and cord rolls in to the track (see image 20, 21 and 22).



IMAGE 12



IMAGE 13



IMAGE 14



IMAGE 15



IMAGE 16



IMAGE 17



IMAGE 18

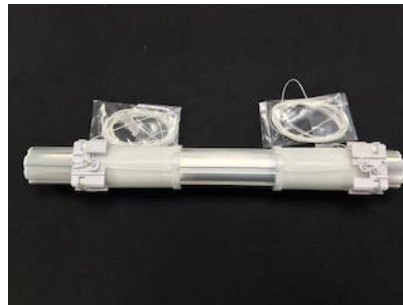


IMAGE 19



IMAGE 20



IMAGE 21



IMAGE 22

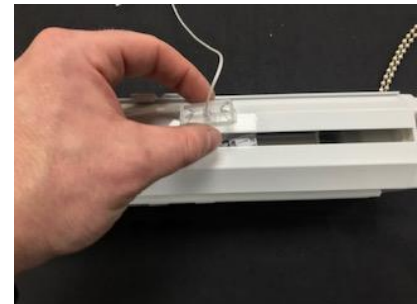


IMAGE 23

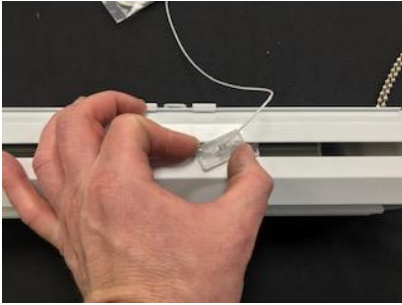


IMAGE 24

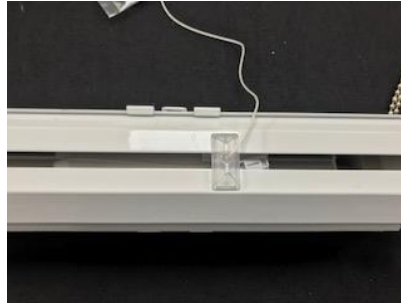


IMAGE 25

### **STEP 7, CONTROL UNIT TYPE 1:5:-**

Level off brass screw on the control unit (see image 25) and feed the rod in to the control unit and fasten down (see image 26, 27), then take off the end of the control unit and feed in to the track (see image 28, 29)



IMAGE 25 (910015 1.5 CONTROL UNIT)



IMAGE 26

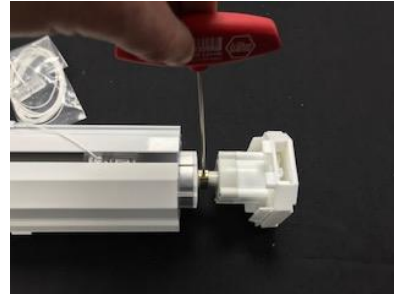


IMAGE 27

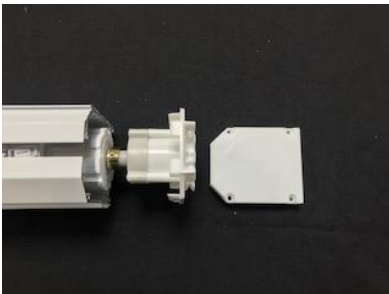


IMAGE 28



IMAGE 29

### **PART 8, CHAIN COLOUR & LENGTH: -**

Check chain colour and size, cut chain to the size specified with the pliers, then place the end of the chain in the pliers and pop one ball off, then place the other end of the chain in the pliers and prize a small open in the ball, then attach both ends and push pliers to connect the chain. Then add the chain to the circular cog and push in to the control unit, please see images below.

### **STEP 9, CONTROL UNIT & ENDCAP: -**

Once the chain has been made add to the control unit and add end of control unit and fasten down (see image 30, 31), then move to the opposite side and line up end cap with rod. Ensure rod sits inside the centre circle of the endcap (see image 32, 33) then add screws and fasten down (see image 34)



IMAGE 30



IMAGE 31

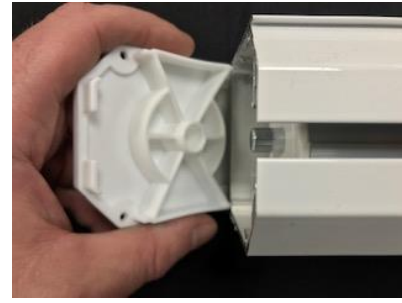


IMAGE 32

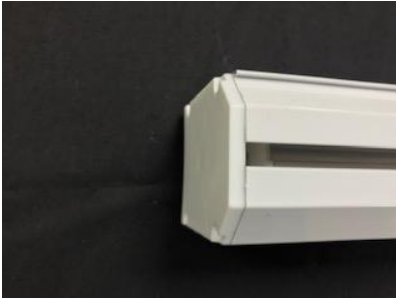


IMAGE 33



IMAGE 34



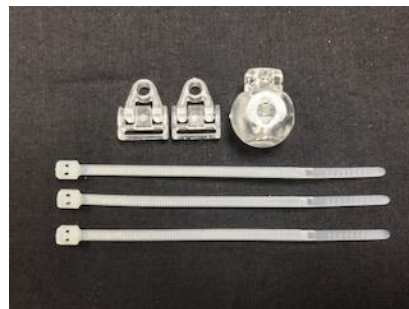
IMAGE 35

**STEP 10, SAFETY DEVICES (76666, 76444, TOGGLE ONLY AND LABELS): -**

Check safety devices selected and total amount, apply them in a bag place the chain in the bag and secure with an elastic band (1 toggle and 1 cable tie per cord spool and 2 breakaway devices and 2 cable tie per cord spool (except 76666. See below



76666 breakaway and toggle (no tie)



76444 breakaway, toggle and tie



toggle only



910010 SAFETY LABEL

**\*\*\*BEFORE PACKAGING TICK OFF EACH ITEM TO MAKE SURE NO STEPS HAVE BEEN MISSED AND NO ITEMS ARE MISSING\*\*\***

<b>STEPS</b>	<b>COMPLETE?</b> <i>Please tick</i>
<b>STEP 1</b>	
<b>STEP 2</b>	
<b>STEP 3</b>	
<b>STEP 4</b>	
<b>STEP 5</b>	
<b>STEP 6</b>	
<b>STEP 7</b>	
<b>STEP 8</b>	
<b>STEP 9</b>	
<b>STEP 10</b>	

**...and that's it! You're finished!**



## WEBTEX ONLINE ORDERING

We understand life gets busy, often the working hours slip away and picking up the phone or emailing during office hours can be a hassle. That's why at Evans we try to make things easier, you can place your order online using our Webtex system whenever works for you and you'll enjoy lots of benefits...

### FAST

It only takes 5 minutes to put through an order online and if it's before 4pm on a weekday, we'll prioritise your order for a speedy delivery (excludes M2M items)

### EXCLUSIVITY

As a privilege to our customers, some of our products are available with a lovely little discount on our website. All M2M tracks and blinds on webtex receive an automatic 10% discount plus if you order 3 more, carriage if completely free of charge!

### SHOP 24/7

There is nothing easier or more comfortable than ordering your products with Evans Textiles from your own workplace, on the go or in the comfort of your own home 24 hours a day, seven days a week!

### DELIVERY THE VERY NEXT DAY

Evans Textiles delivers to the whole of the UK mainland and if you order by 4pm via Webtex we'll ensure your consignment gets to you the following day as standard (excludes M2M)

Evans Textiles (Sales) Ltd, Helmet Street, Manchester, M1 2NT

Registered in England No. 6186585 Part of the Evans Group of Companies



For more guides and videos visit [www.evans-textiles.com/resources](http://www.evans-textiles.com/resources)